



[Drac The Virtual Kvm Plugin Is Not Installed Or Running Hat](#)

The screenshot displays a virtual machine desktop with a blue background and a taskbar at the bottom. Four terminal windows are open, each showing different stages of system boot or configuration:

- Top Left Window:** Title: "idrac-R78FGH5, PowerEdge R720, User: root, 0.9 fps". The main display area is black with the text "No Signal" in white. The status bar at the bottom shows "Current User(s): root : 10.94.193.153".
- Top Right Window:** Title: "idrac-7654321, User: root, 4.5 fps". It shows BIOS initialization messages: "AHCI BIOS not installed", "Initializing Intel(R) Boot Agent XE v2.2.08 PXE 2.1 Build 091 (WFM 2.0)", and "Initializing Intel(R) Boot Agent GE v1.4.03 PXE 2.1 Build 091 (WFM 2.0)". It also lists "PowerEdge Expandable RAID Controller BIOS" and disk detection results: "0 Non-RAID Disk(s) found on the host adapter", "0 Non-RAID Disk(s) handled by BIOS", and "1 Virtual Drive(s) found on the host adapter." The status bar shows "root: 10.94.193.153".
- Bottom Left Window:** Title: "idrac-7654321, PowerEdge M820, Slot 7, User: root, 5.5 fps". It shows a terminal window with a list of network interfaces and their IP addresses, such as "eth0: 10.94.193.153". The status bar shows "root: 10.94.193.153".
- Bottom Right Window:** Title: "idrac-HQXWC25, PowerEdge R720, User: root, 1.2 fps". It shows the "Dell Inc. | SYSTEM SETUP" screen. The "System BIOS" section is highlighted, showing "System BIOS Settings > Boot Settings > BIOS Boot Settings". The "Boot Sequence" is set to "Hard drive C:" and "Embedded SATA Po...". The "Hard-Disk Drive Sequence" is set to "Integrated RAID ...". The status bar shows "Current User(s): root : 10.94.193.153".

[Drac The Virtual Kvm Plugin Is Not Installed Or Running Hat](#)

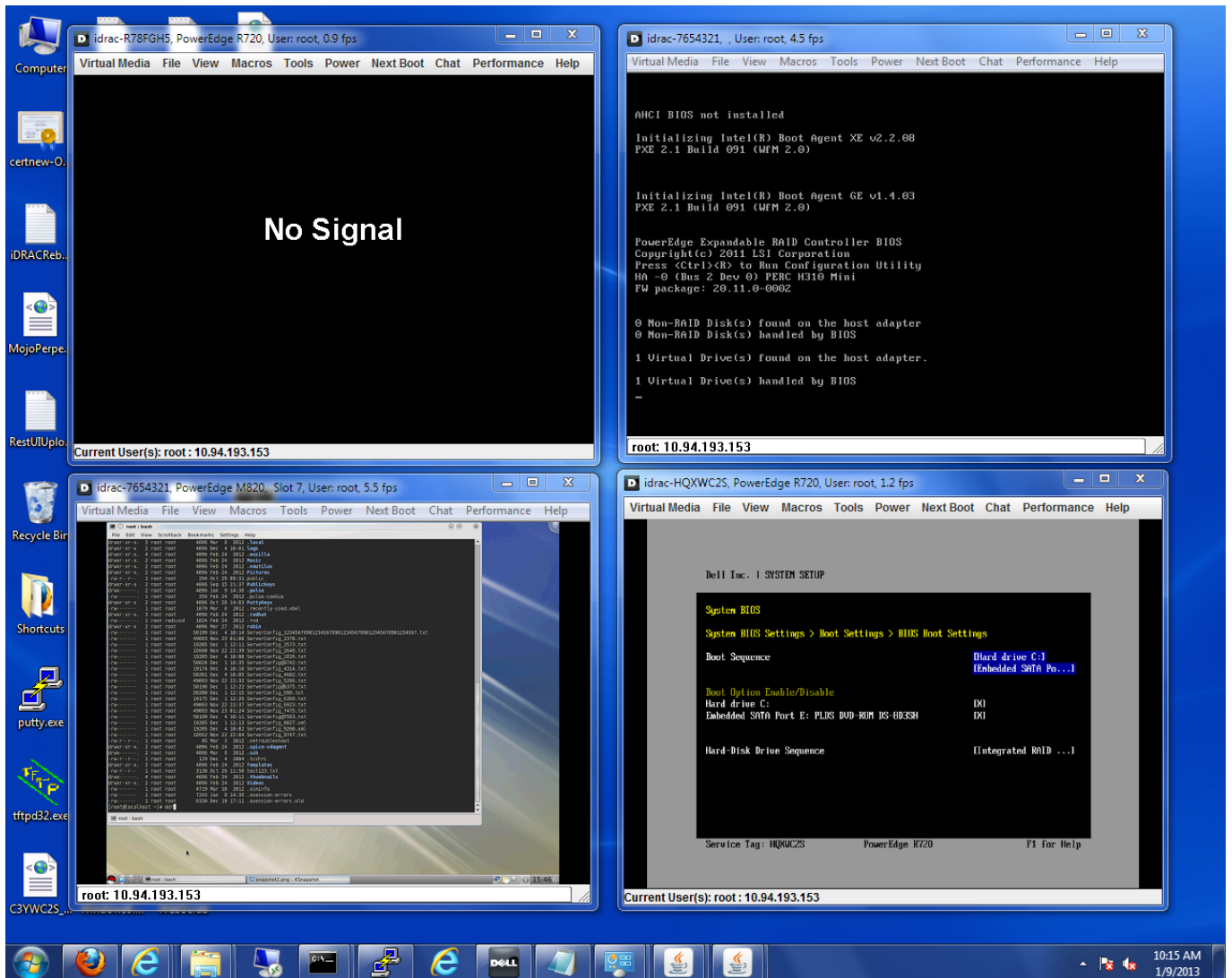


In Windows 2008, click Start and navigate to Control Panel > Java This opens Java Control Panel window.. Virtualisation Extensions Now that we're in a position to begin installing KVM and its components, I thought this would be a good time to show you how to check whether virtualisation extensions are being seen on our CPU from within RHEL.

After first boot, you will want to register to the Red Hat network to receive updates and download software.

[Avira Security For Mac Free](#)

This article will guide you through getting a basic KVM hypervisor up and running and ready for use.. This can be done by running the following command: `subscription-manager register --auto-attach` You will be prompted to enter your username and password.. You can login to the web interface and navigate all of the menus without any re-configuration to the iDRAC settings.. Apr 24, 2013 I've been able to use Dell's Remote Console, iDRAC 6, to work with Google Chrome without any issues.. Whenever going to the media page I would get offered the install, but the error would be on the page. [Vuescan Version 9.2.23 With Serial For Mac](#)



[What Is A Good Publisher Program For Non Mac Computers](#)

[How To Enter Bios For Mac](#)

For the internet zone, in security tab in internet options, select custom level and in the ActiveX controls and plug-ins Enable Automatic Prompting for ActiveX Controls.. In order to fully utilize the KVM, you will need a CPU that has virtualization extensions, and these will need to be enabled in the BIOS of the machine you're working on. [Heidelberg Prinect Signa Station Cracked](#)

[Epson L805 Driver For Mac](#)

Clicking install would drop me back to the login page for the DRAC I have found 2 fixes.. In general, you'll need to look to enable VT-X or AMD-V depending on your system architecture.. Add the IP address of the DRAC server as a site into the local intranet zone in the security tab in Internet Options.. Tyga well done 3 mixtape zip Our Objectives • Set up a RedHat Enterprise Linux (RHEL 7.. The Java jnlp files run in the Java Web Start application, which is included with the Java install.. With this in mind, we will be working on the basis that you have opted for a 'minimal install' of RHEL.. A DRAC 5 error has occurred–Media Active-X plugin install Editor's Note: If you have a Linux system that runs KVM and would like to try Red Hat Enterprise Linux on KVM, follow our KVM Get started guide, The kernel-based Virtual Machine (KVM) is a virtualization infrastructure many have become familiar with throughout the industry.. This will allow us to fine tune the installation by only installing what we need, and it also gives us a better understanding of how everything fits together.. 2) server • Identify whether Virtualisation extensions are present • Install KVM and associated software components • Networking Considerations • Configure VNC • Demonstrate how to fire up a new Virtual Machine running on the KVM hypervisor • Listing existing Virtual Machines Installing RHEL For the purposes of this article, I'm going to be showing you how to manually install KVM from the command line, rather than opt to have it installed as part of the RHEL installation process.. Recently had this issue after getting DRAC 5 to work in Internet Explorer 9 (IE9). cea114251b [Red Hat Iso Download Ftp](#)

cea114251b

[Osirix Download For Mac 10.6 8](#)